

TUSCANY^{xTE}
BY THOR MOTOR COACH

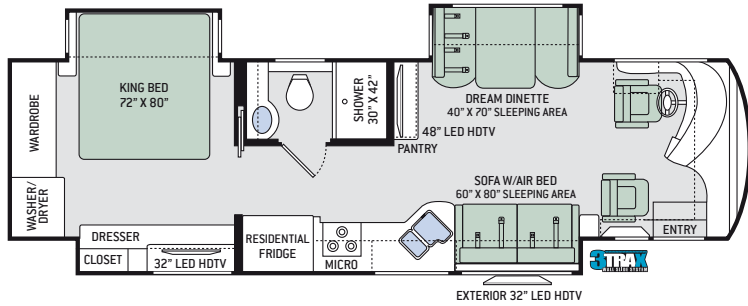


 **THOR**
MOTOR COACH

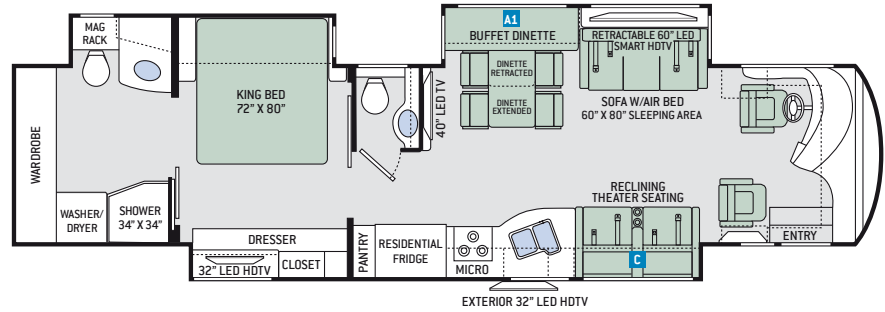
Made to fit.

Floor Plans

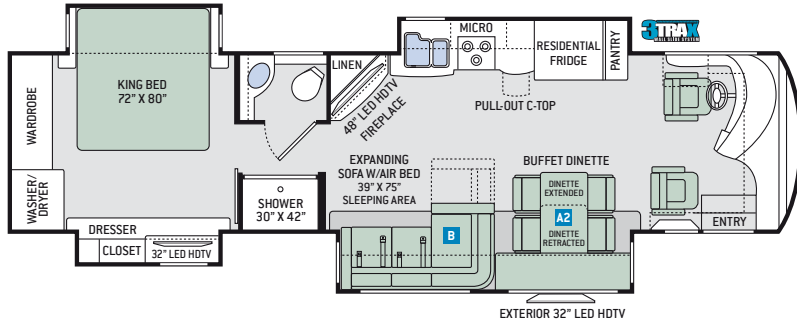
34ST



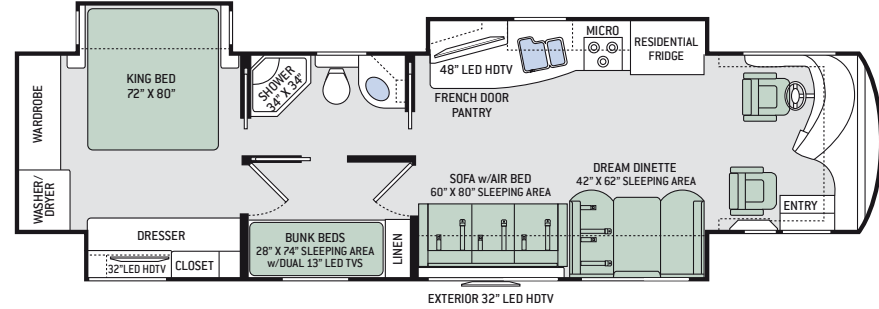
40AX



36MQ



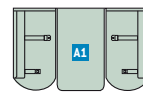
40BX



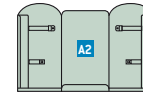
Specifications

	34ST	36MQ	40AX	40BX
Chassis	Freightliner XC-R	Freightliner XC-R	Freightliner XC-R	Freightliner XC-R
Gross Vehicle (GVWR)	32,400	32,400	35,320	35,320
Gross Combined (GCWR)	42,400	42,400	45,320	45,320
Wheel Base	208"	236"	276"	276"
Exterior Length	35'-4"	37'-8"	41'	41'
Exterior Height (w/AC)	12'-7"	12'-7"	12'-7"	12'-7"
Exterior Width (w/o mirrors)	101"	101"	101"	101"
Interior Height (living area)	85"	85"	85"	85"
Awning Size	16'-5"	13'-1"	16'-5"	16'-5"
Fuel (gal)	100	100	100	100
LPG (lbs)	126	126	126	126
Fresh/Waste/Gray Water (gal)	91 / 51 / 51	91 / 51 / 51	91 / 51 / 51	91 / 51 / 51
Water Heater (gal)	10	10	10	10
Furnace (BTUs)	Dual 20,000	Dual 20,000	20,000 & 25,000	20,000 & 25,000
Exterior Storage Capacity (cu. ft.)	140	185	225	225

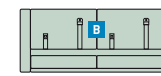
OPTIONS



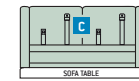
OPTIONAL DREAM DINETTE
36" X 62" SLEEPING AREA



OPTIONAL DREAM DINETTE -
36" X 62" SLEEPING AREA
(EXTERIOR TV N/A WHEN OPTIONED)



OPTIONAL SOFA W/AIR BED
60" X 80" SLEEPING AREA



OPTIONAL JACK-KNIFE SOFA
40" X 68" SLEEPING AREA



This triple track design supports large rooms, like those found in full-wall slideouts, ensuring simple, reliable, maintenance-free operation. What sets 3TRAX™ apart is the patented rail system, in-floor roller guides and electric motor design which is contained within the sidewall of the motorhome.

Interior Decor



AVANT-GARDE



IVORY SONATA



LUNA CREST



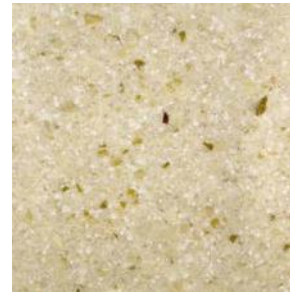
HIGH-GLOSS GLAZED MILAN CHERRY



HIGH-GLOSS GLAZED PACIFIC CHERRY



HIGH-GLOSS GLAZED RESORT CHERRY



KITCHEN & BATH COUNTERTOPS



BEDROOM COUNTERTOP



POLISHED PORCELAIN TILE FLOORING

Exterior Graphics



BAJA FULL-BODY PAINT



CAMBRIDGE FULL-BODY PAINT



CRANBERRY FULL-BODY PAINT



SOLARIS FULL-BODY PAINT



VALENCIA FULL-BODY PAINT

Features

CONSTRUCTION & EXTERIOR

- Freightliner® XC-R Raised Rail Chassis
- Cummins® ISB-XT 6.7L Diesel Engine with 360HP & 800 lb.-ft. Torque
- 6-Speed Allison MH-3000 Automatic Transmission
- Air-Ride™ Suspension
- I-Beam Front Axle with 55° Wheel Cut
- Full Air Front Disc & Rear Drum Anti-Lock Brakes
- Exhaust Brake
- Sachs® Shock Absorbers
- Dual Fuel Fills
- One-Piece Fiberglass Front & Rear Caps
- Invisible Front Paint Protection
- One-Piece Tinted Windshield
- Full-Body Paint Package w/Gel Coated Sidewalls
- Automatic Leveling Jacks with Touchpad Controls
- Locking Side-Hinged Compartment Doors
- Full Basement Pass-Through Storage
- Easy Slide Storage Tray
- Power Entry Door & Patio Awnings with Integrated LED Lighting
- Slideout Topper Awnings
- 3TRAX® Wall Slide System (34ST & 36MQ)
- Roof Ladder
- Frameless Dual Pane Windows
- Outside Shower

AUTOMOTIVE & COCKPIT

- 10" Touchscreen AM/FM Dash Radio with CD/DVD Player, Bluetooth® & Back-Up Monitor
- Chrome Heated/Power Mirrors with Integrated Side View Cameras
- Leatherette Reclining/Swivel Captain's Chairs with 6-Way Power Adjustment

- Driver & Passenger Overhead Storage Cabinetry
- Fog Lights
- Air Horn
- Power Solar & Privacy Shades on Windshield
- Manual Solar & Privacy Shades on Side Windows
- Electric Step Cover
- 10,000-lb. Trailer Hitch with 7-pin Round Connector
- 275/80R 22.5" Radial Tires with Aluminum Wheels

INTERIOR

- Porcelain Tile Throughout
- High-Gloss Glazed Cabinetry with Raised Panel Hardwood Cabinet Doors & Nickel Finish Hardware
- Hardwood Veneer in Select Areas
- LED Lighting
- Window Solar & Privacy Shades
- Electric Fireplace with Remote Control (36MQ)
- Leatherette Sofa with Air Bed (STD 34ST, 40AX & 40BX)
- Leatherette Expanding Sofa with Air Bed (36MQ)
- Leatherette Theater Seating with Footrest (40AX)
- Leatherette Dream Dinette® Booth (34ST & 40BX)
- Buffet Dinette with Four (4) Chairs – Includes Two (2) Folding (36MQ & 40AX)

INTERIOR OPTIONS

- Leatherette Sofa with Air Bed (36MQ)
- Leatherette Jack-Knife Sofa (40AX)
- Leatherette Dream Dinette® Booth (36MQ - Exterior TV N/A when Optioned & 40AX)

KITCHEN

- 22 cu. ft. Stainless Steel Residential Refrigerator with In-Door Ice & Water Dispenser
- 3-Burner Gas Cooktop
- 1.9 cu. ft. Stainless Steel Over-the-Range Convection Microwave Oven
- Solid Surface Countertops, Cooktop Cover & Sink Covers
- Large Double Bowl Sink with Single Handle Faucet & Sprayer
- Designer Backsplash with Tile Accent
- 12-Volt Attic Fan with Cover

BEDROOM & BATHROOM

- Denver Mattress® Pillowtop King Size Bed
- Bedspread with Throw Pillows
- USB Charging Ports in Nightstands
- Bunk Beds (40BX)
- Porcelain Toilet
- Oversized Full Height Shower with Glass Door
- Power Vent in Bathroom

ENTERTAINMENT

- 48" LED Smart HDTV in Living Area (34ST, 36MQ & 40BX)
- 40" LED HDTV & 60" LED Smart HDTV in Living Area (40AX)
- Surround Sound Blu-Ray Home Theater in Living Area
- 32" LED HDTV in Bedroom
- Dual 13" LED TVs with DVD Player in Bunk Bed Area (40BX)
- Exterior 32" LED HDTV (N/A in 36MQ when Dream Dinette Optioned)
- Cable TV & HDMI Video Ready

- Winegard™ TRAV'LER HD Satellite Dish (HD-capable with DirecTV in US. Shaw Direct in Canada)

ENTERTAINMENT OPTIONS

- 32" LED HDTV in Cockpit Overhead (34ST, 36MQ & 40BX)

ELECTRICAL & PLUMBING

- Cummins Onan® RV QD 8000 Diesel Generator
- Automatic Generator Start
- 50-amp Shoreline Power Cord
- Firefly® Multiplex Wiring Control System
- Pre-Wired for Solar Charging
- 2000-watt Inverter / 100-amp Converter
- Dual 15,000 BTU Low-Profile Ducted Air Conditioners with Two (2) Heat Pumps
- Dual 20,000 BTU Ducted Electronic Ignition Furnaces (34ST & 36MQ)
- (1) 20,000 & (1) 25,000 BTU Ducted Electronic Ignition Furnace (40AX & 40BX)
- Energy Management System
- Emergency Start Switch
- Four (4) Auxiliary House Batteries
- Battery Disconnect Switch
- Exterior GFCI Recept
- 10-gallon DSI Gas/Electric Water Heater
- Enclosed & Heated Holding Tanks
- E-Z Flow Water Panel with Whole-House Water Filtration
- Black Tank Flush System
- Systems Control Center
- Stackable Washer & Dryer
- Central Vacuum System with Toe-Kick Dustpan

IMPORTANT—PLEASE READ: This brochure reflects product design, fabrication, material, components and specifications at the date of printing, which date is disclosed below. **Please visit us online at ThorMotorCoach.com or consult with your selling dealership for the latest in standards, options, specification and technical information.** Photographs in the brochure may depict optional equipment or may only be available in certain floor plans. Components, appliances and the chassis may have been manufactured in a calendar year before the vehicle's designated model year. All capacities are approximate. The actual length of the vehicle may differ from that indicated in the brochure due to variances in the manufacturing processes and/or installed components. All dry weights are based on standard model features and do not include optional features or equipment. Component part and appliance manufacturers issue limited warranties covering portions of the vehicle not covered under the limited warranty we issue. Copyright Thor Motor Coach, Inc. © MY 06/09/16

YOUR LOCAL THOR MOTOR COACH DEALER



Made to fit.

thormotorcoach.com/tuscany/xtc

P.O. Box 1486, Elkhart, IN 46515 Sales Department: 800.860.5658 Customer Service: 877.855.2867

